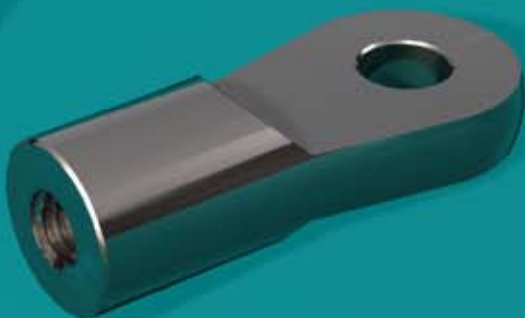
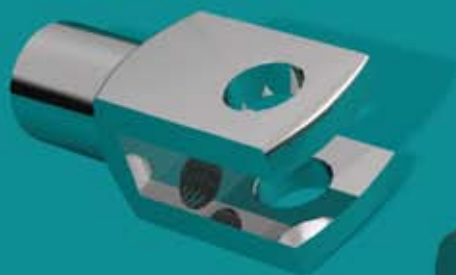


END FITTINGS



END FITTINGS

Loops

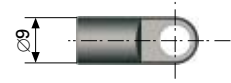
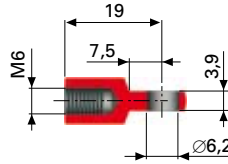


100. Loop M6

Steel

Black chrome

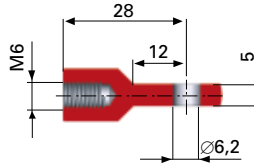
Cat.no: 4612



1. Loop M6

Zinc

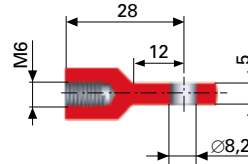
Cat.no: 4592



2. Loop M6

Zinc

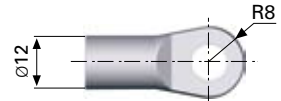
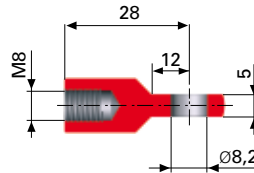
Cat.no: 4593



13. Loop M8

Zinc

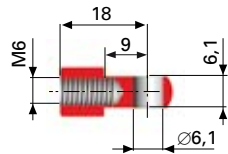
Cat.no: 4601



222. Loop M6

Aluminium

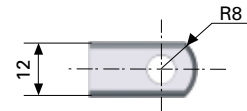
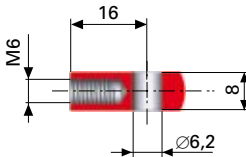
Cat.no: 4225



4. Loop M6

Aluminium

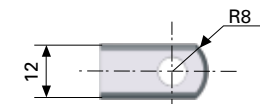
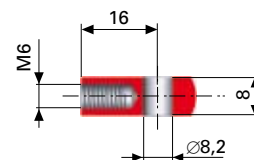
Cat.no: 4595



6. Loop M6

Aluminium

Cat.no: 4596



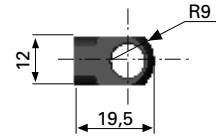
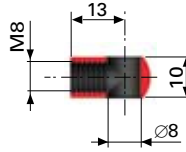
END FITTINGS

Loops

44. Loop M8

Steel
Black chrome
Screw tap max 8.5 mm

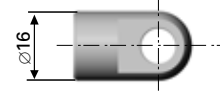
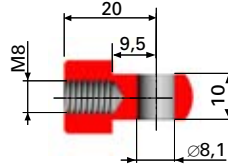
Cat.no: 6600



16. Loop M8

Aluminium

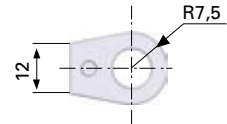
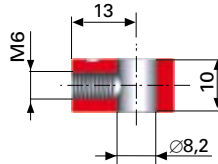
Cat.no: 4012



10. Loop M6

Zinc

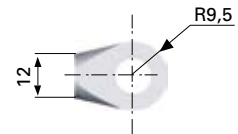
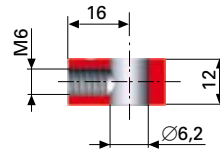
Cat.no: 6599



220. Loop M6

Zinc

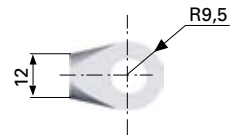
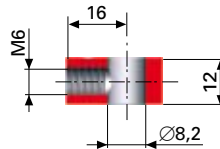
Cat.no: 8243



221. Loop M6

Zinc

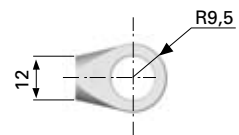
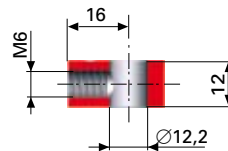
Cat.no: 8244



102. Loop M6

Zinc

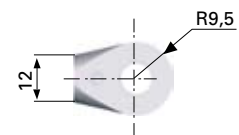
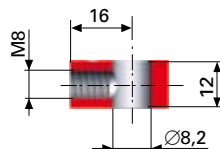
Cat.no: 4614



15. Loop M8

Zinc

Cat.no: 4603



END FITTINGS

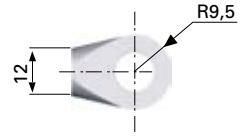
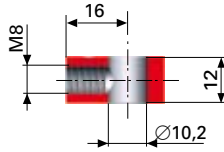
Loops and anchors



31. Loop M8

Zinc

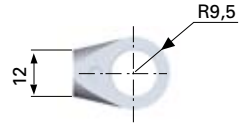
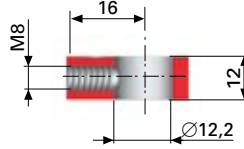
Cat.no: 8245



26. Loop M8

Zinc

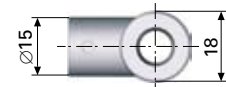
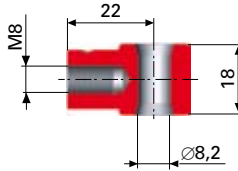
Cat.no: 4606



20. Loop M8

Zinc

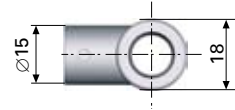
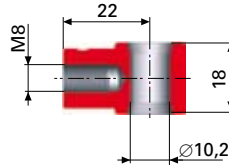
Cat.no: 6649



46. Loop M8

Zinc

Cat.no: 6650



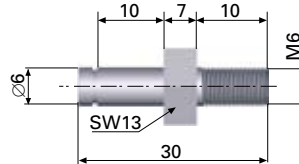
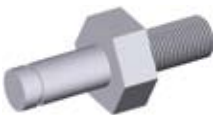
116. Anchor

Steel

Galvanised

Locking clip included

Cat.no: 6412



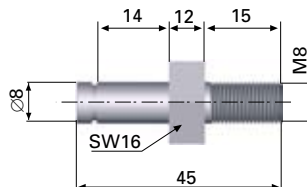
115. Anchor

Steel

Galvanised

Locking clip included

Cat.no: 6411



END FITTINGS

Brackets

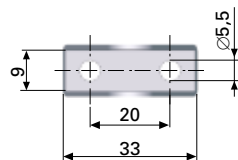
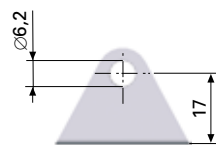
112. Bracket

Steel

Galvanised

Bolt and locking clip included

Cat.no: 6408



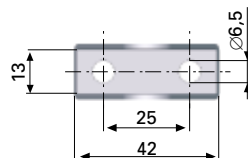
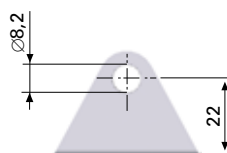
111. Bracket

Steel

Galvanised

Bolt and locking clip included

Cat.no: 6407

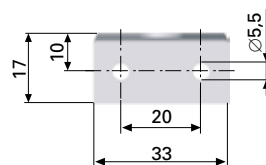
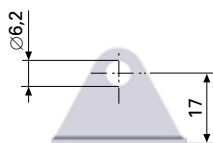


114. Bracket

Steel

Galvanised

Cat.no: 6410

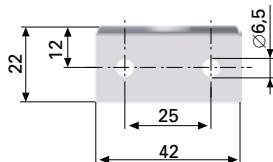
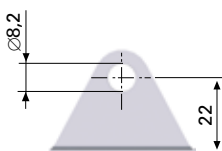


113. Bracket

Steel

Galvanised

Cat.no: 6409



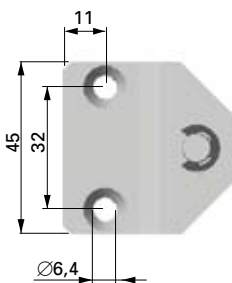
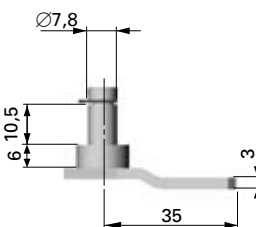
119. Bracket

Steel

Galvanised

Locking clip included

Cat.no: 4623



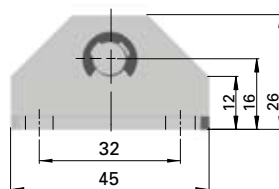
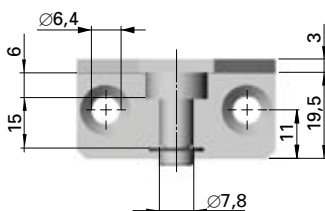
120. Bracket

Steel

Galvanised

Locking clip included

Cat.no: 4624



END FITTINGS

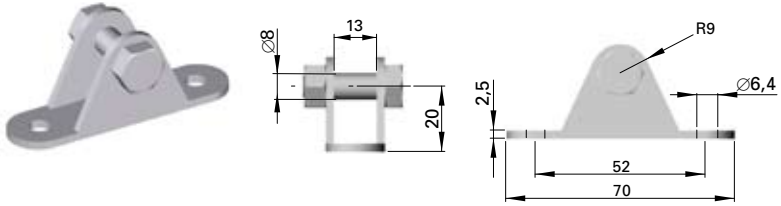
Brackets and clevises



137. Bracket

Steel
Galvanised
Bolt and nut included

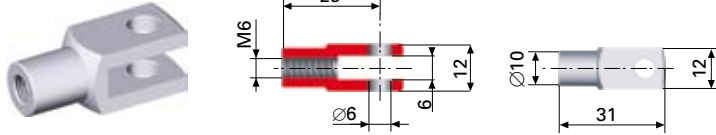
Cat.no: 4628



108. Clevis M6

Steel
Galvanised

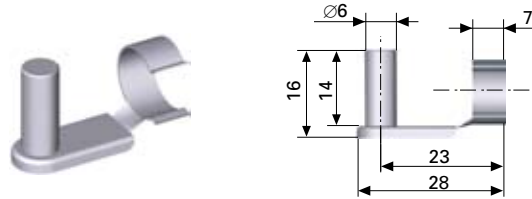
Cat.no: 4620



109. Locking clip

Steel
Galvanised
Fits no. 108

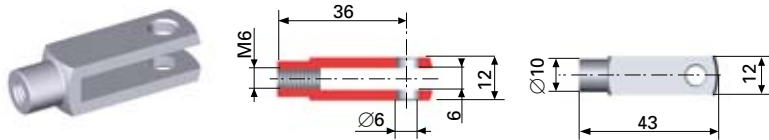
Cat.no: 4621



105. Clevis M6

Steel
Galvanised

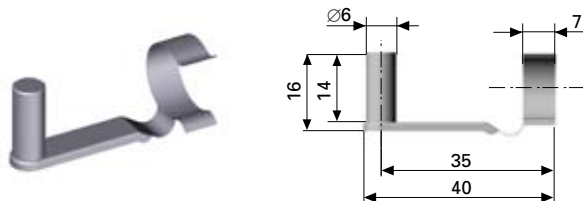
Cat.no: 4996



106. Locking clip

Steel
Galvanised
Fits no. 105

Cat.no: 5089



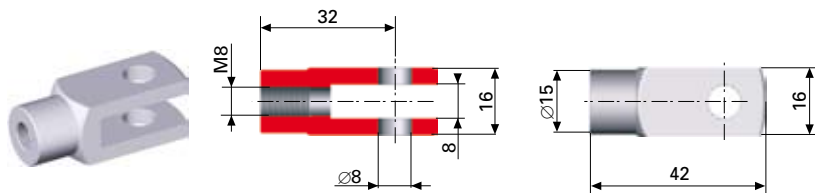
END FITTINGS

Clevises

21. Clevis M8

Steel
Galvanised

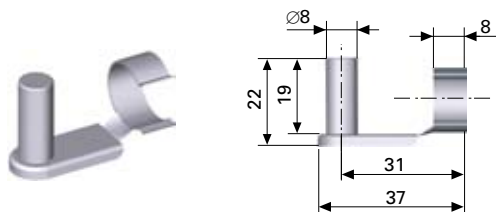
Cat.no: 4605



107. Locking clip

Steel
Galvanised
Fits no. 21

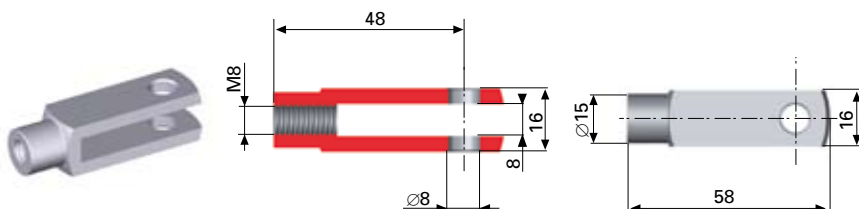
Cat.no: 4619



22. Clevis M8

Steel
Galvanised

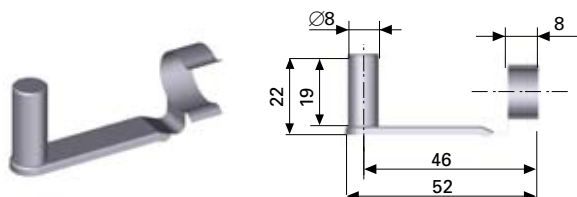
Cat.no: 4214



23. Locking clip

Steel
Galvanised
Fits no. 22

Cat.no: 4215



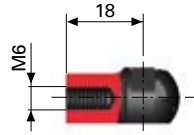


141. Ballcup M6, Ø 10

Plastic, black

Locking clip in black galvanised steel

Cat.no: 4597

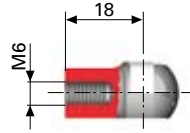


144. Ballcup M6, Ø 10

Plastic, grey

Locking clip chromated steel

Cat.no: 1114

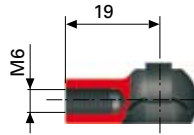


3. Ballcup M6, Ø 10

Steel

Black chrome

Cat.no: 4594



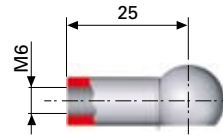
103. Ballcup M6, Ø 10

Steel

Galvanised

Lockwire included

Cat.no: 4615



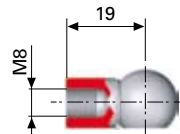
14. Ballcup M8, Ø 10

Steel

Galvanised

Lockwire included

Cat.no: 4602



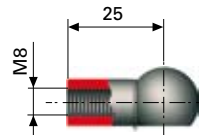
73. Ballcup M8, Ø 13

Steel

Black chrome

Lockwire included

Cat.no: 6651



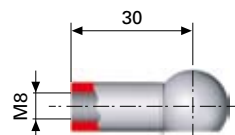
11. Ballcup M8, Ø 13

Steel

Galvanised

Lockwire included

Cat.no: 4599



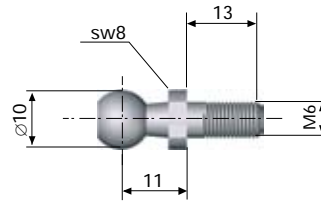
END FITTINGS

Ball studs and axial ball links

104. Ball stud M6, Ø 10

Steel
Galvanised

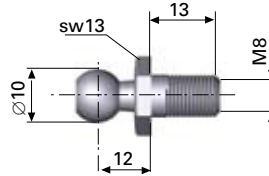
Cat.no: 4616



39. Ball stud M8, Ø 10

Steel
Galvanised

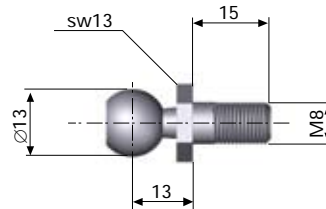
Cat.no: 4610



40. Ball stud M8, Ø 13

Steel
Galvanised

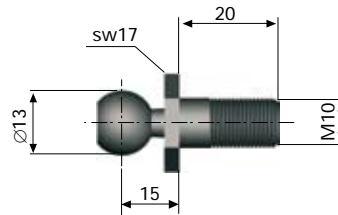
Cat.no: 4611



43. Ball stud M10, Ø 13

Steel
Black chrome

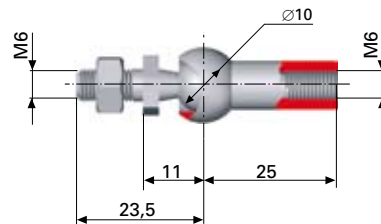
Cat.no: 8272



121. Ball link, axial M6

Steel
Galvanised
Including nut

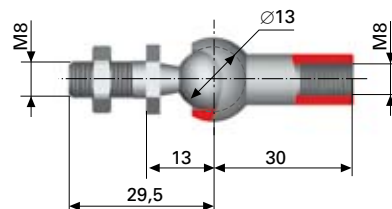
Cat.no: 8960



122. Ball link, axial M8

Steel
Galvanised
Including nut

Cat.no: 8961



END FITTINGS

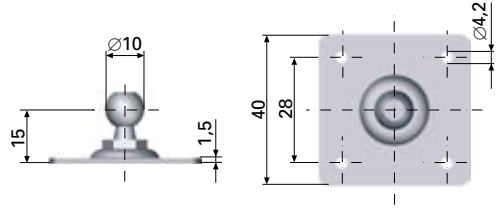
Socket ball on plate



117. Socket ball on plate Ø 10

Steel
Galvanised

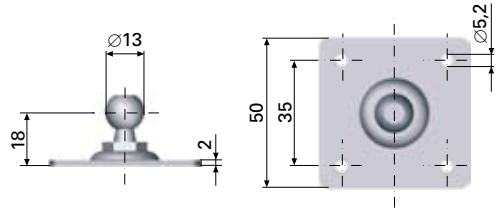
Cat.no: 8273



118. Socket ball on plate Ø 13

Steel
Galvanised

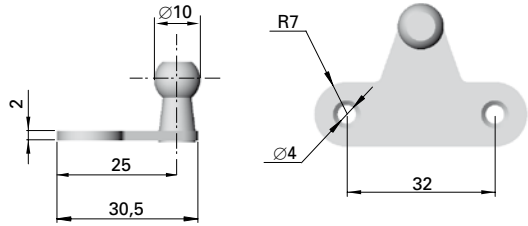
Cat.no: 8274



134. Socket ball on plate Ø 10

Steel
Galvanised

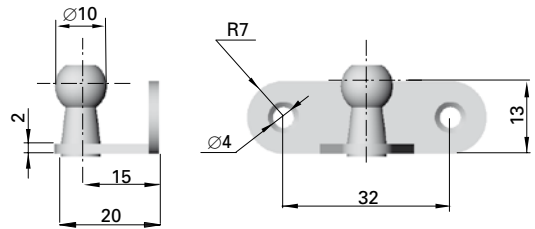
Cat.no: 4625



135. Socket ball on plate Ø 10

Steel
Galvanised

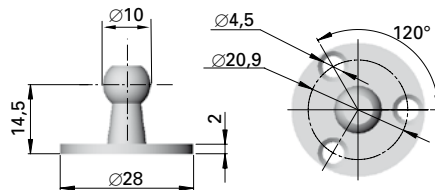
Cat.no: 4626



136. Socket ball on plate Ø 10

Steel
Galvanised

Cat.no: 4627



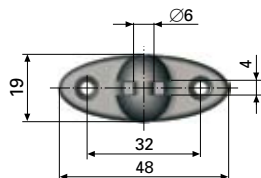
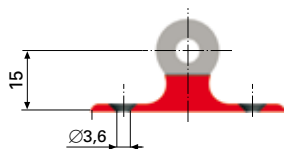
END FITTINGS

Brackets and fittings

123. Bracket

Plastic, black

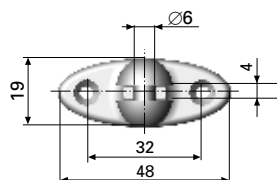
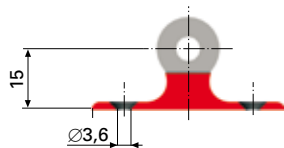
Cat.no: 8962



142. Bracket

Plastic, grey

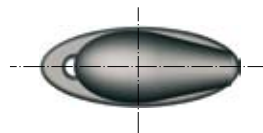
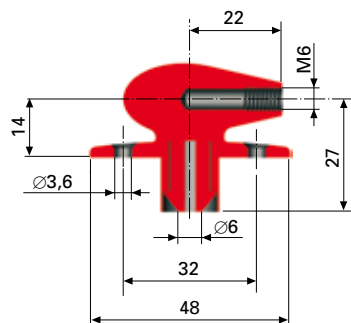
Cat.no.: 1115



124. End fitting

Plastic, black

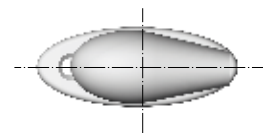
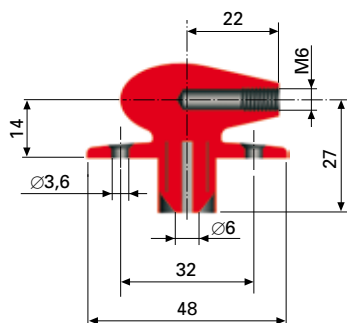
Cat.no: 8963



143. End fitting

Plastic, grey

Cat.no: 1116



END FITTINGS

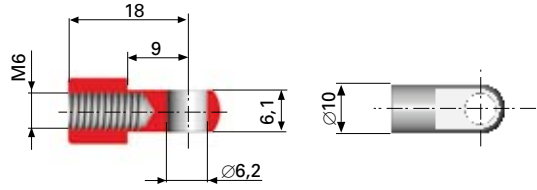
Loops and brackets – Stainless



139. Loop M6

AISI 303 (E No. 1.4305)

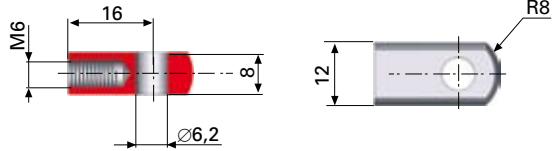
Cat.no: S1137



125. Loop M6

W 1.4305 (E No. 1.4305)

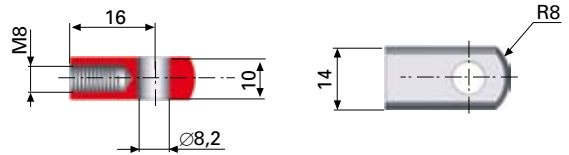
Cat.no: S1129



129. Loop M8

W 1.4305 (E No. 1.4305)

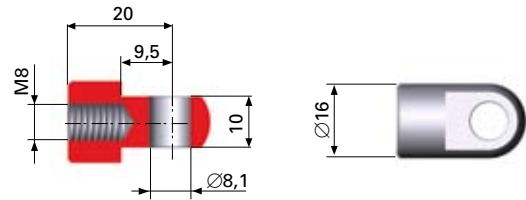
Cat.no: S1133



140. Loop M8

AISI 303 (E No. 1.4305)

Cat.no: S1138

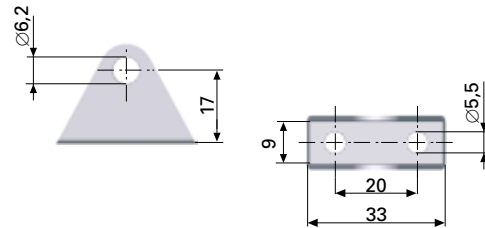


128. Bracket

SS2333-02 (E No. 1.4301)

Bolt and locking clip included

Cat.no: S1132

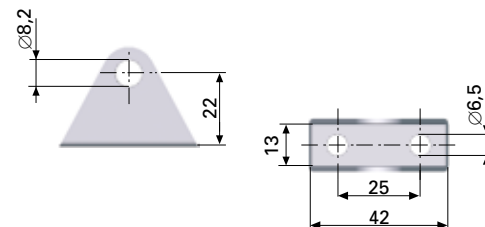


132. Bracket

SS2333-02 (E No. 1.4301)

Bolt and locking clip included

Cat.no: S1136



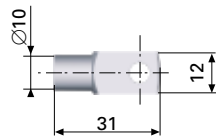
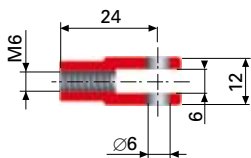
END FITTINGS

Clevises, ballcups, ball joints and ball studs – Stainless

126. Clevis M6

W 1.4305 (E No. 1.4305)

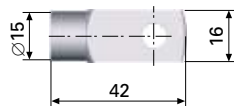
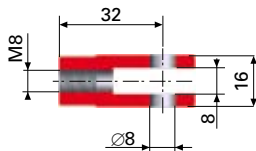
Cat.no: S1130



130. Clevis M8

W 1.4305 (E No. 1.4305)

Cat.no: S1134

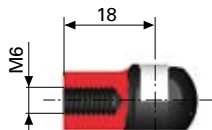


138. Ballcup M6, Ø 10

Plastic, black

Locking clip STS301
(E No. 1.4310)

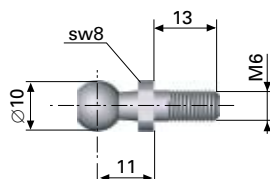
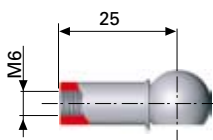
Cat.no: 4629



127. Ball joint M6

W 1.4305 (E No. 1.4305)

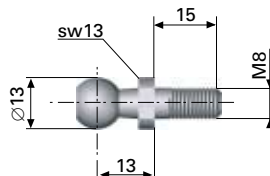
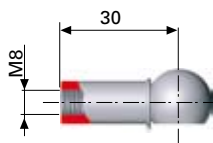
Cat.no: S1131



131. Ball joint M8

W 1.4305 (E No. 1.4305)

Cat.no: S1135



145. Ball stud M8, Ø 10

W 1.4305 (E No. 1.4305)

Cat.no: S1139

